

AL748 - NEW MAIN AIR CONTROL VALVE

AL116 - 8mm SWIVEL TEE

AL45 - 8mm ELBOW



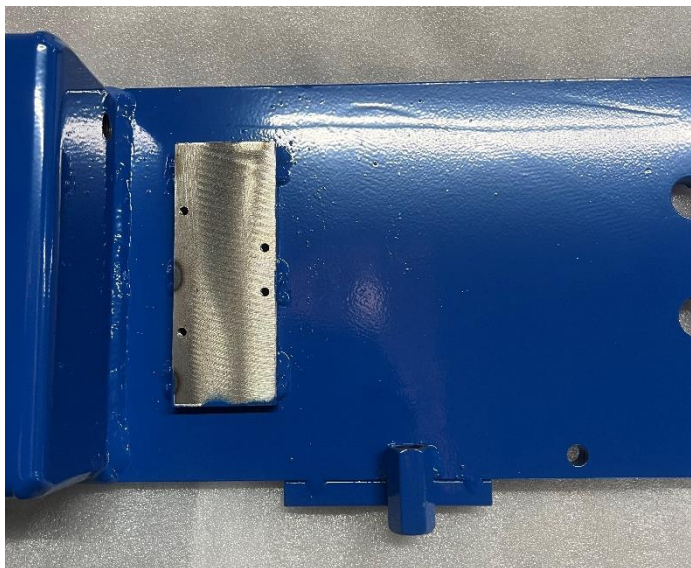
AL118 - 1/4" SILENCER

AL113 - 1/4" BSP

AL111 - AIR PREP UNIT

***AL752 – MAIN AIR CONTROL VALVE FULL ASSEMBLY (ALL PICTURED)***

# INSTALLING NEW MAIN AIR CONTROL VALVE INSTRUCTIONS



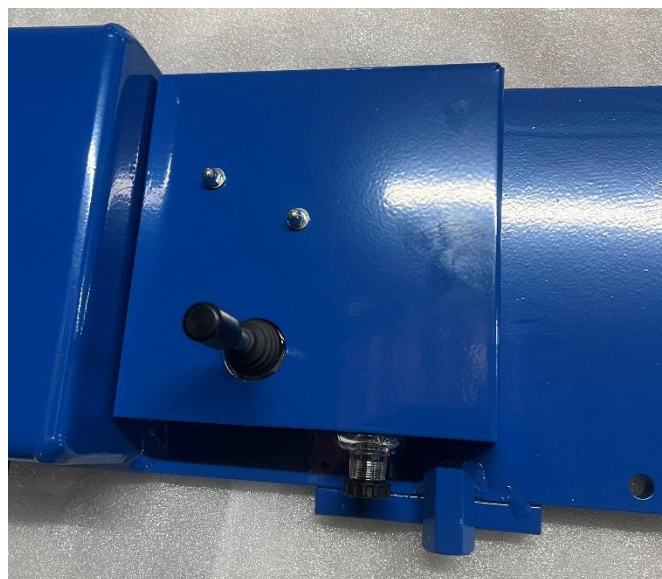
STEP 1 – REMOVE OLD CONTROL VALVE AND ALL FITTING FROM CONTROL VALVE MOUNT



STEP 2 – INSERT 2x MACV BOLT INTO TOP TWO HOLES ON CONTROL VALVE MOUNT



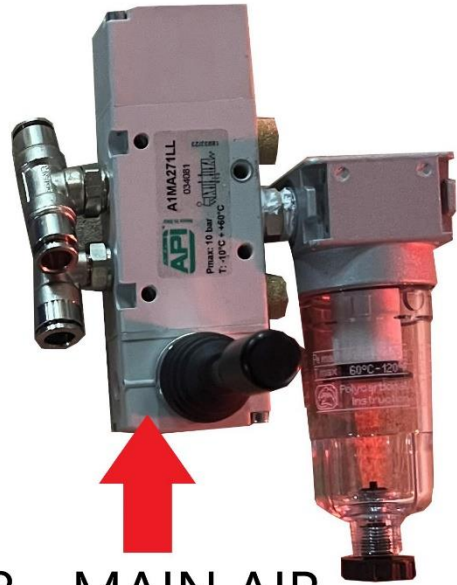
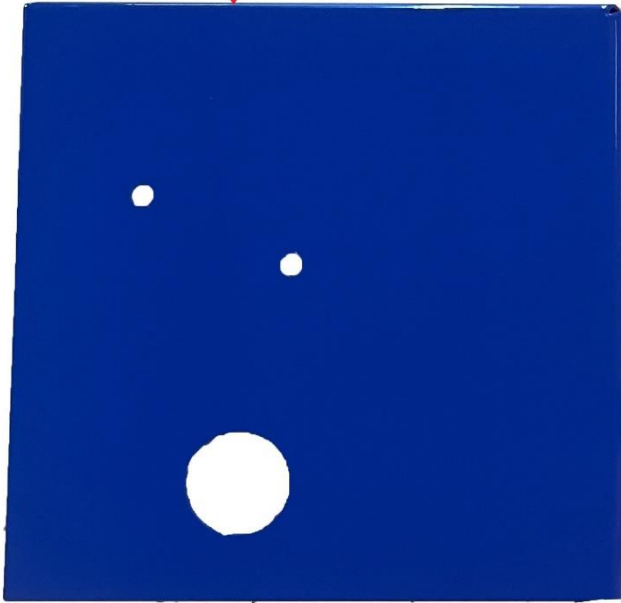
STEP 3 – PLUG IN 8mm TUBING AS NORMAL AND SECURE NEW MAIN AIR CONTROL VALVE TO RIGHT HAND MACV BOLT TIGHTLY WITH AL754 M4 NUT. THEN SCREW ON 2x REMAINING AL754 NUTS TO HEIGHTS SHOWN.



STEP 4 – PLACE AL773 NEW AIR VALVE COVER IN PLACE AND SECURE WITH 2x AL124 WASHER & 2x AL753 DOME NUT.

NEW MAIN AIR CONTROL VALVE KIT

AL773 - NEW AIR  
VALVE COVER



AL748 - MAIN AIR  
CONTROL VALVE ONLY  
(AL752 - FULL ASSEMBLY)



AL124 - WASHER



AL747 - MACV BOLT



AL753 - DOME  
NUT

AL754 - M4 NUT

